

# Harrogate and District NHS Foundation Trust

Council of Governors meeting  
Chief Executive Update

26<sup>th</sup> JANUARY 2019

Dr Ros Tolcher

Chief Executive

Operational performance

News and current issues

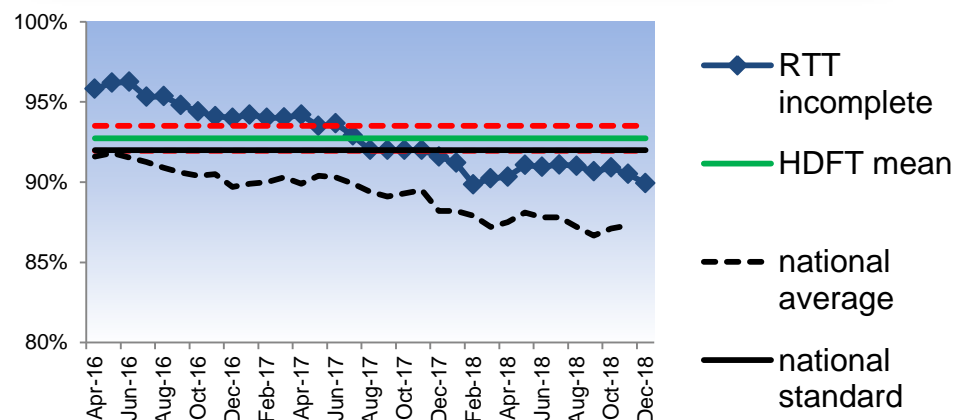
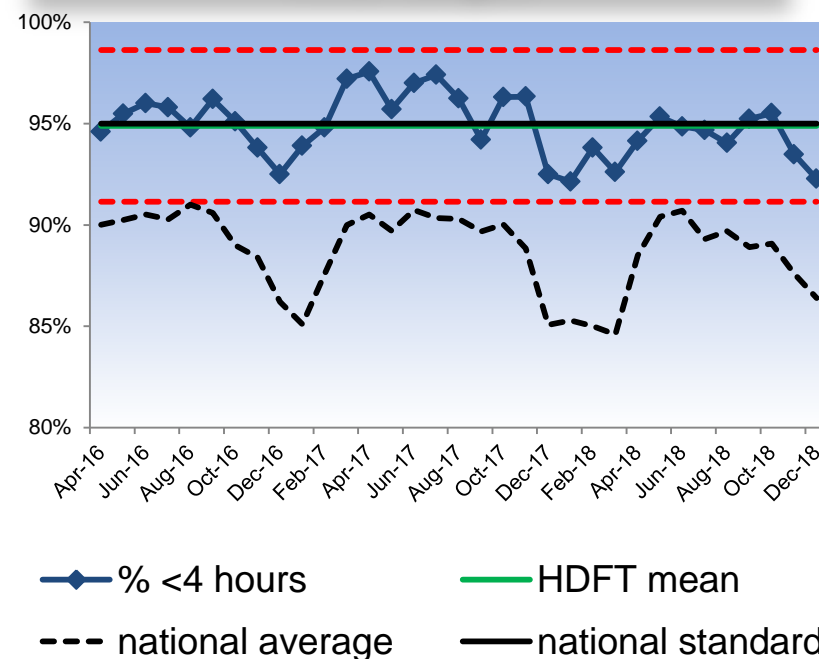
Key risks

# Q3 Operational Performance (details in Integrated Board Report)

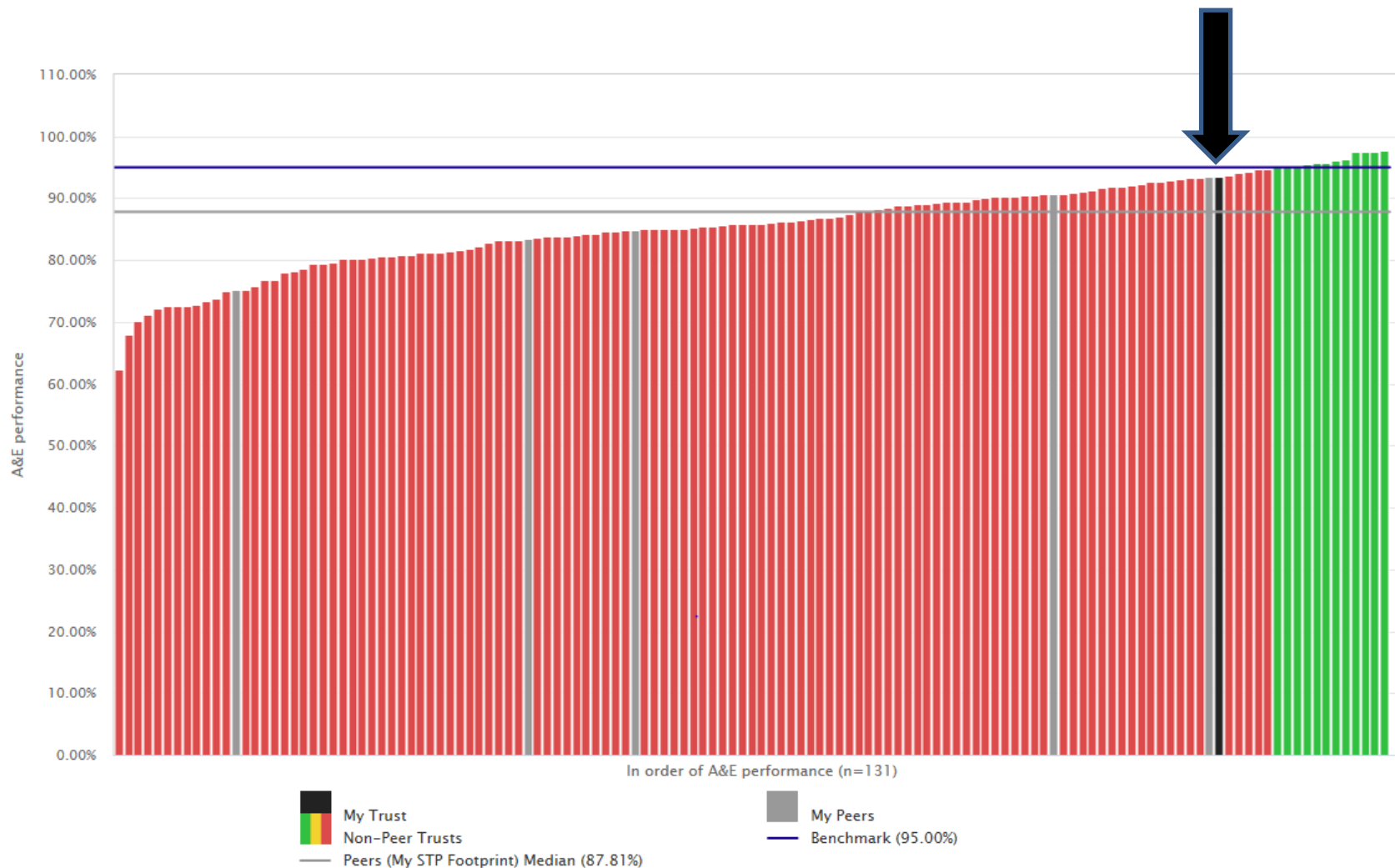
| Standard                    | Q1    | Q2     | Q3    | Q4 | YTD    |
|-----------------------------|-------|--------|-------|----|--------|
| RTT incomplete pathways     | 90.8% | 90.9%  | 90.4% |    | 90.7%  |
| A&E 4-hour standard         | 94.8% | 94.6%  | 93.8% |    | 94.4%  |
| Cancer - 62 days            | 87.3% | 85.3%  | 85.5% |    | 86.0%  |
| Diagnostic waits            | 98.4% | 99.0%  | 99.5% |    | 98.96% |
| Dementia screening - Step 1 | 95.6% | 93.0%  | 93.0% |    | 93.8%  |
| Dementia screening - Step 2 | 95.7% | 100.0% | 98.1% |    | 97.8%  |
| Dementia screening - Step 3 | 97.4% | 100.0% | 96.8% |    | 97.8%  |

ED attendances are 4.8% higher than last year. For the full year to date, 94.4% of patients have been seen within the A&E four hour target

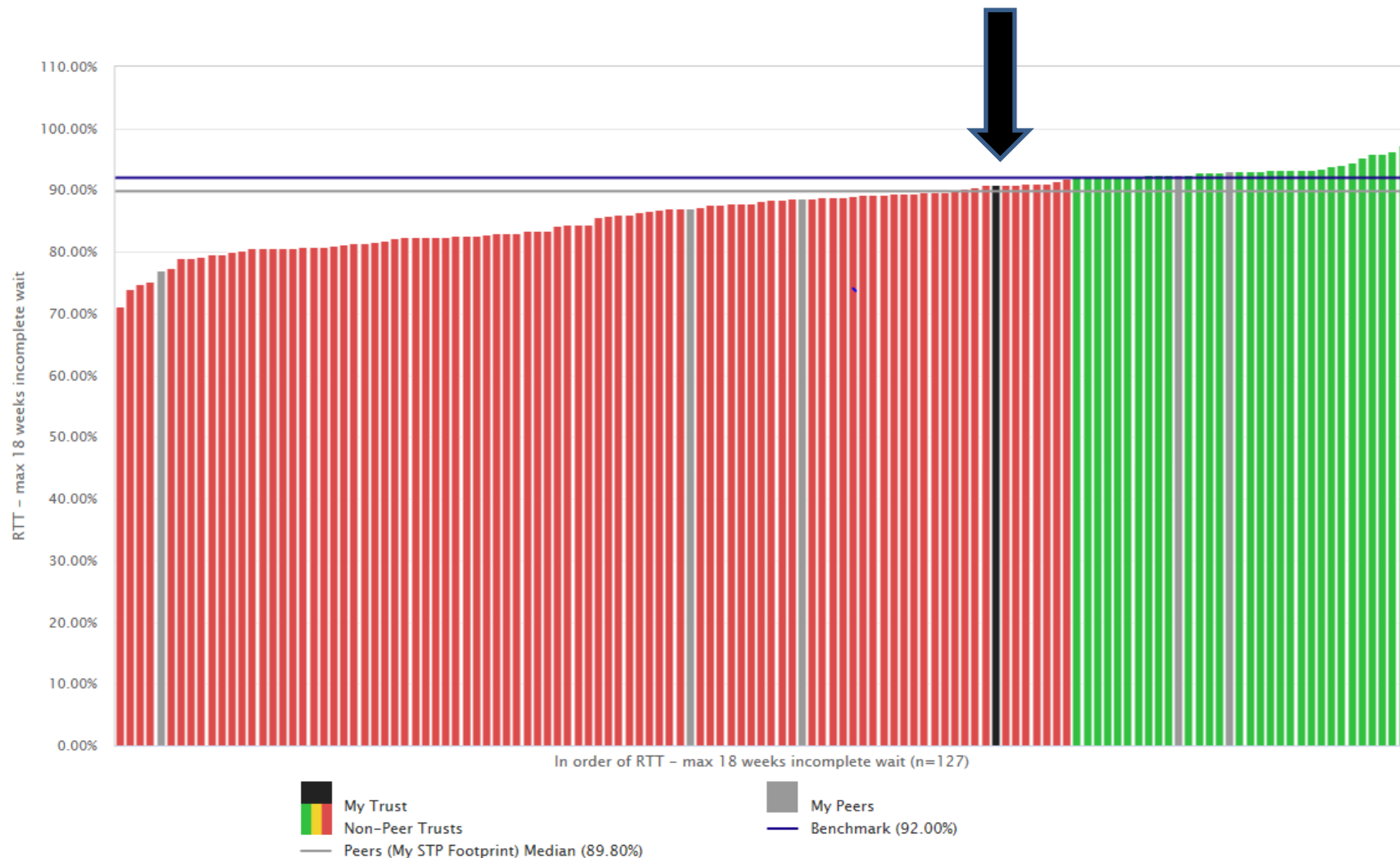
Referral to treatment times remain below the 92% standard



# A&E 4 hour standard national distribution

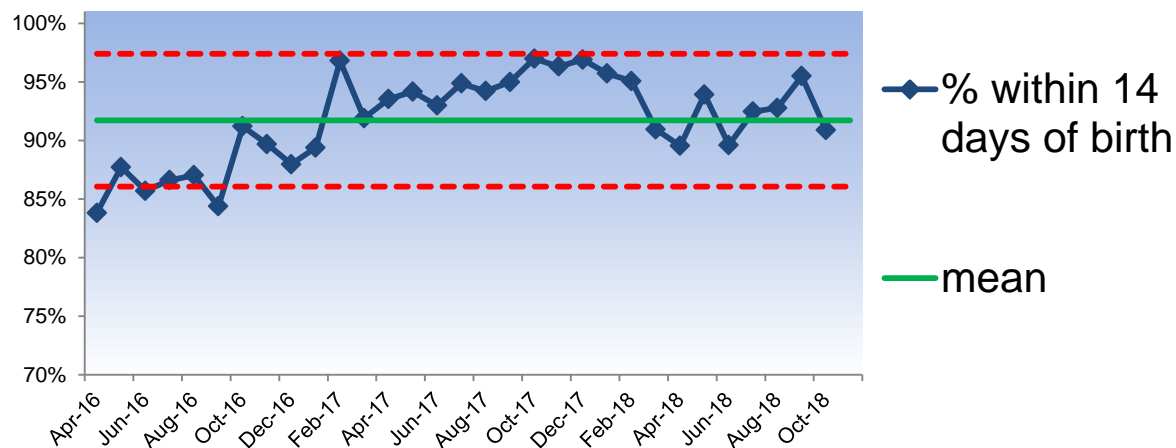


# 18-week Referral to Treatment standard national distribution



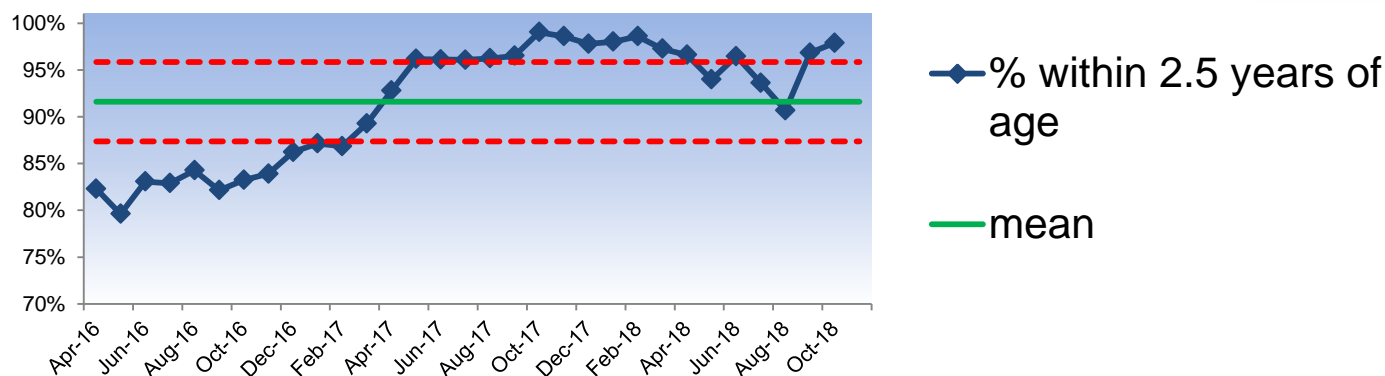
# Q4 Community Children's Services

## Children's Services - 10-14 day new birth visit



Performance in  
our children's  
services remains  
very strong

## Children's Services - 2.5 year review

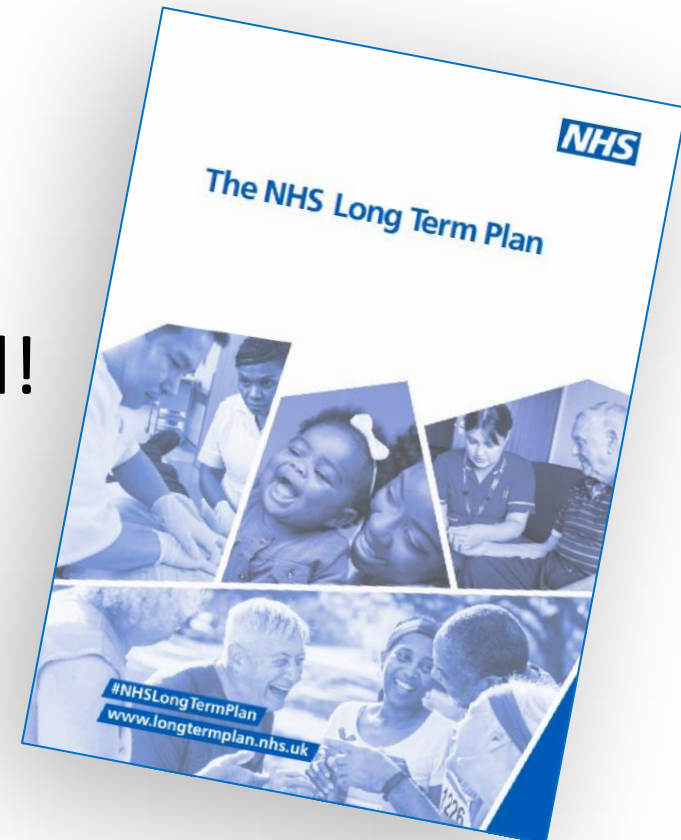


# Q4 Finances

- Our current position is a deficit of £687,000
- Savings plans on track to achieve full £10.7m savings target
- £2.6m Provider Sustainability Funding secured so far this year
- Cash remains a concern
- Minimal capital investment opportunities
- Significant risks to outturn position continue

# News and current Issues

- Responding to the NHS Long Term Plan
- Planning for 2019/20
- EU Exit contingency planning
- Winter pressures and 'Flu
- CQC inspection report awaited!





# The NHS Plan and use of technology



Harrogate and District  
NHS Foundation Trust

**NHS Long Term Plan:**  
“digitally enabled care will go mainstream across the NHS”

## **Examples of how we already use technology to enable safe/efficient care:**

- Electronic prescribing
- Patient track
- Pharmacy robot
- Automated haematology testing
- Social media- to gather feedback and to communicate messages eg flu vaccination; choose well etc
- Digital consent for children's services
- Electronic test requests and reporting
- Digital voice recognition reports/letters
- Digital assessments
- E-rostering
- Mobile/agile working

- Empowering people
- Supporting health and care professionals
- Supporting clinical care
- Improving population health
- Improving clinical efficiency and safety

## **Live projects/future vision:**

- Radiology imaging collaborative
- pathology services collaboration- digitally enabled
- electronic patient record
- hospital at night
- digital bed management

# EU Exit planning

- The Department of Health and Social Care has published Operational Guidance and set up a national Operational Response Centre
  - There will also be local, regional and national teams
- We have an EU Exit planning group overseeing Trust planning and contingencies:
  - supply of medicines and vaccines
  - supply of medical devices and clinical consumables
  - supply of non-clinical consumables, goods and services
  - workforce
  - reciprocal healthcare
  - research and clinical trials
  - data sharing, processing and access

# CQC Inspection

- Unannounced core service inspections in November
- Well Led Review in December
- Report awaited.....

There is a strong focus on quality improvement which is embedded

There is positive collaboration and evidence of system working

Culture was mostly positive. However, you acknowledge that there is some work to do within equality and diversity

There is an experienced, stable and cohesive leadership who can challenge

You need to formally articulate a public engagement strategy, however you recognise this

The leadership team are very visible, we were particularly impressed with this visibility in your community services

# Other news



## Colleagues sign up as fairness champions

## Time to Change pledge to raise awareness of mental health signed



# Other news

**NHS**

Harrogate and District  
NHS Foundation Trust



New family support room  
on Byland Ward thanks to  
generous donations

New Nuclear  
Medicine Gamma  
Scanner



# Top scoring risks January 2019



Harrogate and District  
NHS Foundation Trust

## **The top scoring strategic risks for the Trust relate to:**

1. Failure to deliver the Operational Plan
2. External funding constraints
3. Risk that critical infrastructure is not fit for purpose
4. Risk to senior leadership capacity

## **Key operational risks in the organisation (summarised themes) are:**

1. Risk that financial deficit impacts on services
2. Risk to service delivery due to lack of cash to support capital programme
3. Workforce gaps- and the cost of covering these
4. Critical infrastructure risks due to funding constraints
5. Risks related to national standards



# And finally.....

- This is my last Council of Governors meeting and Steve Russell will take over on 1<sup>st</sup> April
- Thank you for your support, encouragement and challenge over the last 4 and a half years



Any Questions?