

## Long Term and Unscheduled Care

Emergency Medicine  
Acute Medicine  
Cardiology  
Respiratory  
GP Out Of Hours  
MIUs  
Community Response and Overnight Service  
Stroke Care  
Elderly  
Neurology  
Neuro rehabilitation  
Community Care Teams  
Trinity Ward  
Diabetes and Endocrinology  
Discharge Planning  
Nutrition and Dietetics  
Tissue Viability  
Contenance  
Resuscitation  
Cancer Services  
End of Life Care  
Specialist Palliative Care  
Haematology  
Oncology  
Pharmacy  
Pathology  
Radiology  
Infection Prevention Control / TB / New  
Entrant Assessment Team  
Therapy Services aligned to specialities above  
Specialist Nursing Services aligned to services  
above

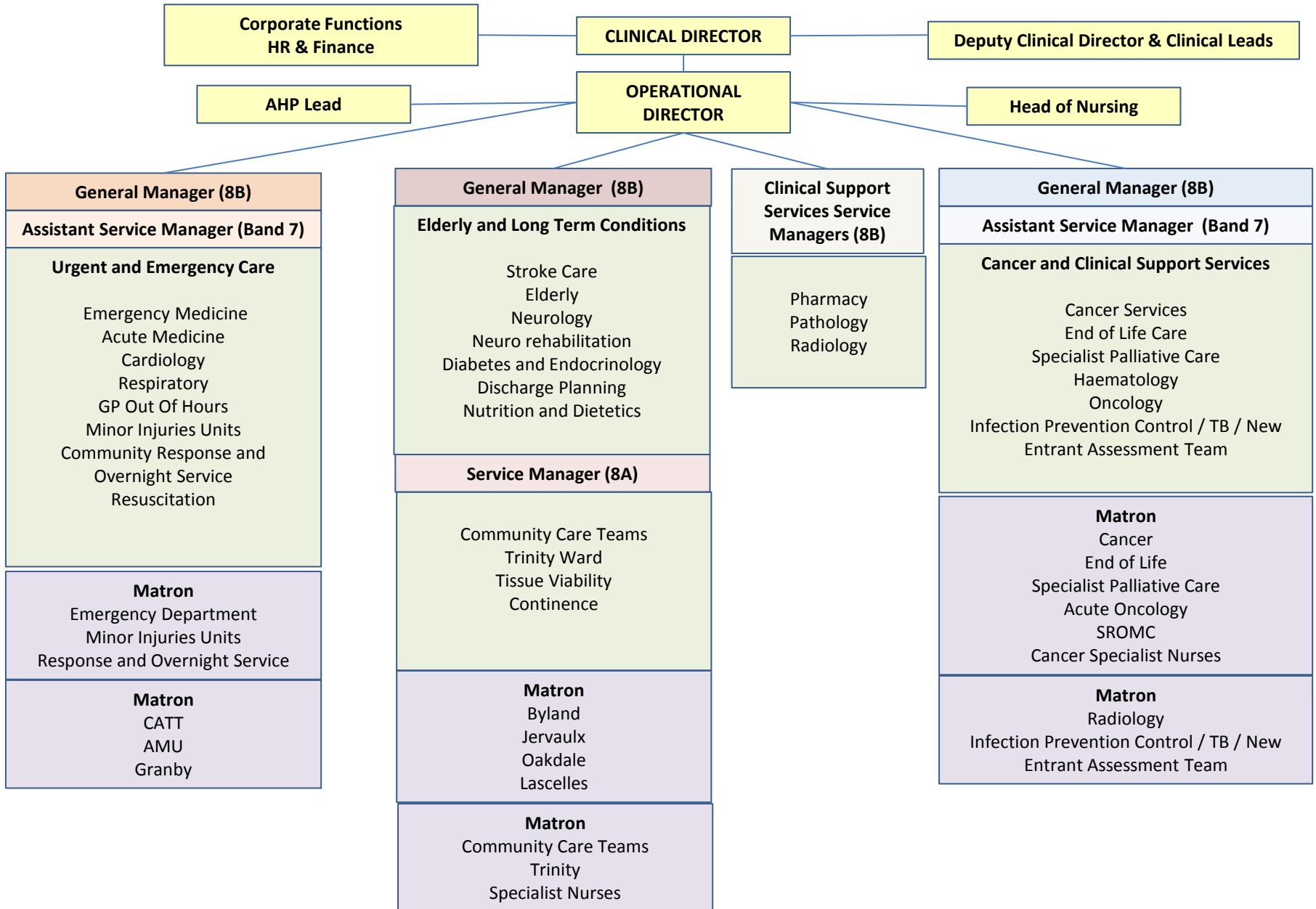
## Planned and Surgical Care

T&O  
Rheumatology  
MSK  
Main Theatres  
Anaesthetics  
Critical Care  
Acute Pain  
Ophthalmology  
ENT  
Max Fac  
Orthodontics  
Dermatology  
Plastics  
Audiology  
Day Surgery  
Obstetrics and Gynaecology  
Urology  
Vascular  
General Surgery  
Gastroenterology  
Bowel Screening  
Endoscopy  
PAAU  
All outpatient departments and locations  
Catheter Lab  
Therapy Services aligned to specialities  
above  
Specialist Nursing Services aligned to  
services above

## Children's and County Wide Community Care

North Yorkshire 0 - 19 Children's Services  
County Durham 0 - 19 Children's Services  
Darlington 0 - 19 Children's Services  
Middlesbrough 0 - 19 Children's Services  
North Yorkshire Autism service  
Community Paediatrics and Child  
Development Centres  
CHIS  
Safeguarding Children  
Looked after Children  
Vaccination and Immunisation  
Acute Paediatrics  
SCBU  
Living with Pain Team and Chronic Fatigue  
Service  
Psychology  
Speech and Language Therapy  
Podiatry  
Wheelchair Services  
Community Equipment  
Community Dental Services  
Therapy Services aligned to specialities  
above  
Specialist Nursing Services aligned to  
services above

# Long Term and Unscheduled Care



Corporate Functions  
HR & Finance

CLINICAL DIRECTOR

Deputy Clinical Director & Clinical Leads

AHP Lead

OPERATIONAL DIRECTOR

Head of Nursing

General Manager (8B)

Assistant Service Manager (Band 7)

**Urgent and Emergency Care**

- Emergency Medicine
- Acute Medicine
- Cardiology
- Respiratory
- GP Out Of Hours
- Minor Injuries Units
- Community Response and Overnight Service
- Resuscitation

**Matron**

- Emergency Department
- Minor Injuries Units
- Response and Overnight Service

**Matron**

- CATT
- AMU
- Granby

General Manager (8B)

**Elderly and Long Term Conditions**

- Stroke Care
- Elderly
- Neurology
- Neuro rehabilitation
- Diabetes and Endocrinology
- Discharge Planning
- Nutrition and Dietetics

Service Manager (8A)

- Community Care Teams
- Trinity Ward
- Tissue Viability
- Continece

**Matron**

- Byland
- Jervaulx
- Oakdale
- Lascelles

**Matron**

- Community Care Teams
- Trinity
- Specialist Nurses

Clinical Support Services Service Managers (8B)

- Pharmacy
- Pathology
- Radiology

General Manager (8B)

Assistant Service Manager (Band 7)

**Cancer and Clinical Support Services**

- Cancer Services
- End of Life Care
- Specialist Palliative Care
- Haematology
- Oncology
- Infection Prevention Control / TB / New Entrant Assessment Team

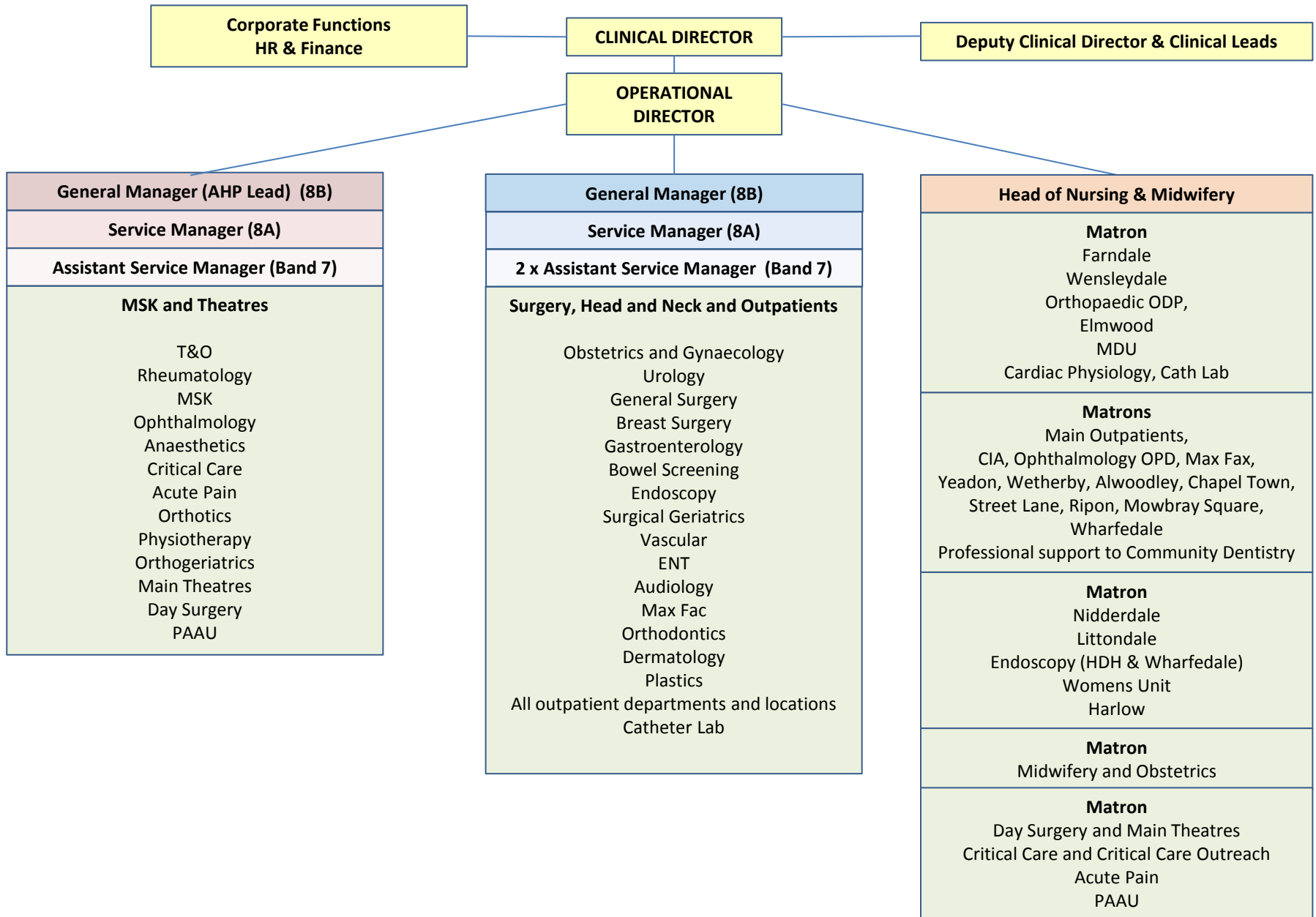
**Matron**

- Cancer
- End of Life
- Specialist Palliative Care
- Acute Oncology
- SROMC
- Cancer Specialist Nurses

**Matron**

- Radiology
- Infection Prevention Control / TB / New Entrant Assessment Team

# Planned and Surgical Care



# Children's and County Wide Community Care

**Corporate Functions  
HR & Finance**

**CLINICAL DIRECTOR**

**Clinical Leads**

**Head of Children's Safeguarding**  
**Trust Wide Children's Safeguarding Teams**

**OPERATIONAL DIRECTOR**

**Head of Children's Public Health Nursing (8B)**  
**North Yorkshire, Darlington and Middlesbrough Community Children's Services**  
0 - 19 Children's Services  
NY Child Health Information Service  
Looked after Children  
Vaccination and Immunisations

**Head of Children's Public Health Nursing (8B)**  
**County Durham Community Children's Services**  
0 - 19 Children's Services  
Looked after Children  
Vaccination and Immunisations

**General Manager (AHP Lead) (8B)**  
**County Wide Community Services**  
Podiatry  
Psychology  
Living with Pain Team and Chronic Fatigue  
Speech and Language Therapy

**Paediatric and Dental Service Manager (8A)**

<b>Matron</b>	North Yorkshire Autism service Community Paediatrics and Child Development Centres
Acute Paediatrics Woodlands Ward Special Care Baby Unit Paediatrics OPD	<b>Out Patient Matron*</b>
	Community Dental Services

**Service Manager (8A)**  
Wheelchair Services  
Community Equipment

*\* N.B. Out Patient Matron is from the Planned and Surgical Care Directorate*